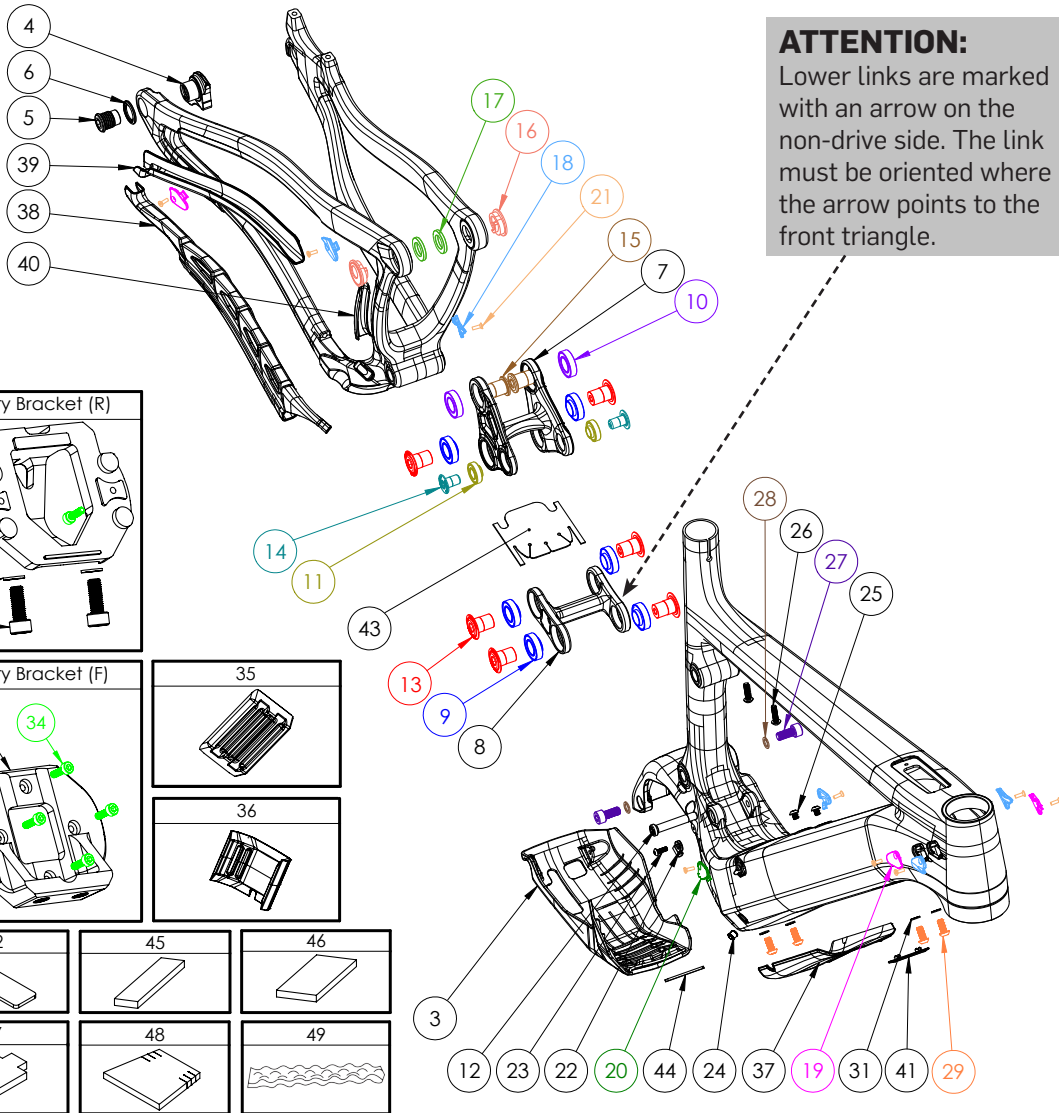


SHUTTLE AM



ATTENTION:
Lower links are marked with an arrow on the non-drive side. The link must be oriented where the arrow points to the front triangle.

HARDWARE NUMBER	PART NUMBER	DESCRIPTION	TORQUE	*
3	FP-CVR-SKIDPLT-SHTV6-VI-RI	SHUTTLE V6 SKID PLATE		
4	FP-UDH-TA-12MM-BLK-VI-RI	UNIVERSAL REAR DERAILLEUR HANGER		
5	-	UNIVERSAL REAR DERAILLEUR HANGER BOLT	25 NM (18 LB-FT)	
6	-	UNIVERSAL REAR DERAILLEUR HANGER WASHER		
7	FP-LNK-UL-68MM-VI-RI	68MM UPPER LINK		
8	FP-LNK-LL-50MM-V3-RI	50MM OUT-TO-OUT LOWER LINK V3		
9	FP-BRG-6902-LLUMAXECN	28MM 6902 EXTENDED MAX-E BEARING		R
10	FP-BRG-6902-LLUMAX	28MM 6902 STANDARD MAX BEARING		R
11	FP-BRG-6900-LLUMAXE	22MM 6900 EXT'D MAX-E BEARING		R
12	FP-BLT-M8*45.7-BLK-V2	M8 FRONT SHOCK BOLT FOR 30.1MM SHOCK SPACING	13 NM (10 LB-FT)	G / L
13	FP-BLT-M14*20-BLK-V2-R2	M14X20 LINK BOLT	35 NM (27 LB-FT)	L
14	FP-BLT-M10*16.5-BLK-VI	M10 TRUNNION MOUNT BOLT	13 NM (10 LB-FT)	L
15	FP-BLT-M14*20-BLK-V3-R2	M14X20 FLIP CHIP BOLT	35 NM (27 LB-FT)	L
16	FP-NUT-FLIPCHIP-4.6MM-VI	4.6MM FLIP CHIP		
17	FP-WSH-SPC-151*250*3W	M14X3MM FLIP CHIP SPACER		G
18	FP-CLM-MECH-FRM-VI	INTERNAL ROUTING CABLE CLAMP		
19	FP-CVR-MECH-FRM-V2	INTERNAL ROUTING HOLE COVER		
20	FP-CLM-MECH-FRM-V2	INTERNAL ROUTING CABLE CLAMP (MIRRORED)		
21	FP-SCW-FLT-M3*10-BLK	CABLE PORT CLAMP SCREW BLACK		
22	FP-CLM-ADEL-VI-RI	CABLE ROUTING ADEL CLAMP		
23	FP-SCW-BTN-M4*12-BLK-VI-RI	M4X12 ADEL CLAMP MOUNTING BOLT		
24	FP-PLG-DI2-7*8*5	7X8MM DI2 PLUG EXT'D		
25	FP-BLT-BTN-M5*6-VI-RI	M5X6 DT WATER BOTTLE BOLTS	3 NM (26 IN-LB)	L
26	PIVOT WB BOLTS V2	TOP TUBE TOOL BOLTS		
27	FP-SCW-SCK-M8*18-RI-BLK	M8X18 SOCKET HEAD SCREW BLACK	20 NM (14.75 LB-FT)	L
28	FP-WSH-81*120*1W-BLK	M8 WASHER BLACK		
29	FP-SCW-BTN-M6*14-BLK-VI-RI	M6X14 FRONT BRACKET/SKID PLATE BOLTS	6 NM / 1.5 NM	L
30	FP-SCW-SCK-M6*16-BLK-VI-RI	M6X16 REAR BRACKET BOLTS	6 NM (4.4 LB-FT)	L
31	FP-WSH-M6-BLK-VI-RI	M6 WASHER BLACK		
32	FP-MNT-FRNT-BATT-SLTV2-VI-RI	FRONT BATTERY BRACKET		
33	FP-MNT-REAR-BATT-SLTV2-VI-RI	REAR BATTERY BRACKET		
34	FP-BLT-SCK-M3*10-VI-RI	BATTERY MOUNTING BOLTS		
35	FP-BATT-PAD-60*70-VI-RI	UPPER BATTERY PAD		
36	FP-BATT-PAD-LWR-87.3MM-VI-RI	LOWER BATTERY PAD		
37	FP-PRO-SHTV6-DT-VI-RI	SHTLV6 DOWNTUBE PROTECTOR		
38	FP-PRO-SHTV6-CS-VI-RI	SHTLV6 CHAINSTAY PROTECTOR		
39	FP-PRO-SHTV6-SS-VI-RI	SHTLV6 SEATSTAY PROTECTOR		
40	FP-PRO-SHTV6-UR-VI-RI	SHTLV6 UPRIGHT PROTECTOR		
41	FP-PLG-BATT-MOUNT-VI-RI	BOSCH BATTERY MOUNT FRAME PLUG		
42	FP-PRO-BATT-CABLE-PAD-VI-RI	BOSCH BATTERY CABLE PAD		
43	FP-PRO-LL-50MM-V3-RI	LOWER LINK PROTECTOR		
44	FP-PAD-SKIDPLT-44*5*2-VI-RI	SKID PLATE RUBBER PAD		
45	FP-PRO-SOUND-10*35*185-VI-RI	HT FOAM BEHIND CABLE PORTS 35X185 (MD/LG/XL)		
46	FP-PRO-SOUND-10*60*160-VI-RI	TT AND DT FOAM 160X160 (SM/MD/LG/XL)		
47	FP-PRO-SOUND-10*55*90-VI-RI	BB/DT FOAM 55X90 TARGET (SM/MD/LG/XL)		
48	FP-PRO-SOUND-10*65*110-VI-RI	HT FOAM IN FRONT OF CABLE PORTS 80-110X95 (SM/MD/LG/XL)		
49	FP-PRO-SOUND-30*48*330-VI-RI	TT FOAM 30X48X330 (SM/MD/LG/XL)		

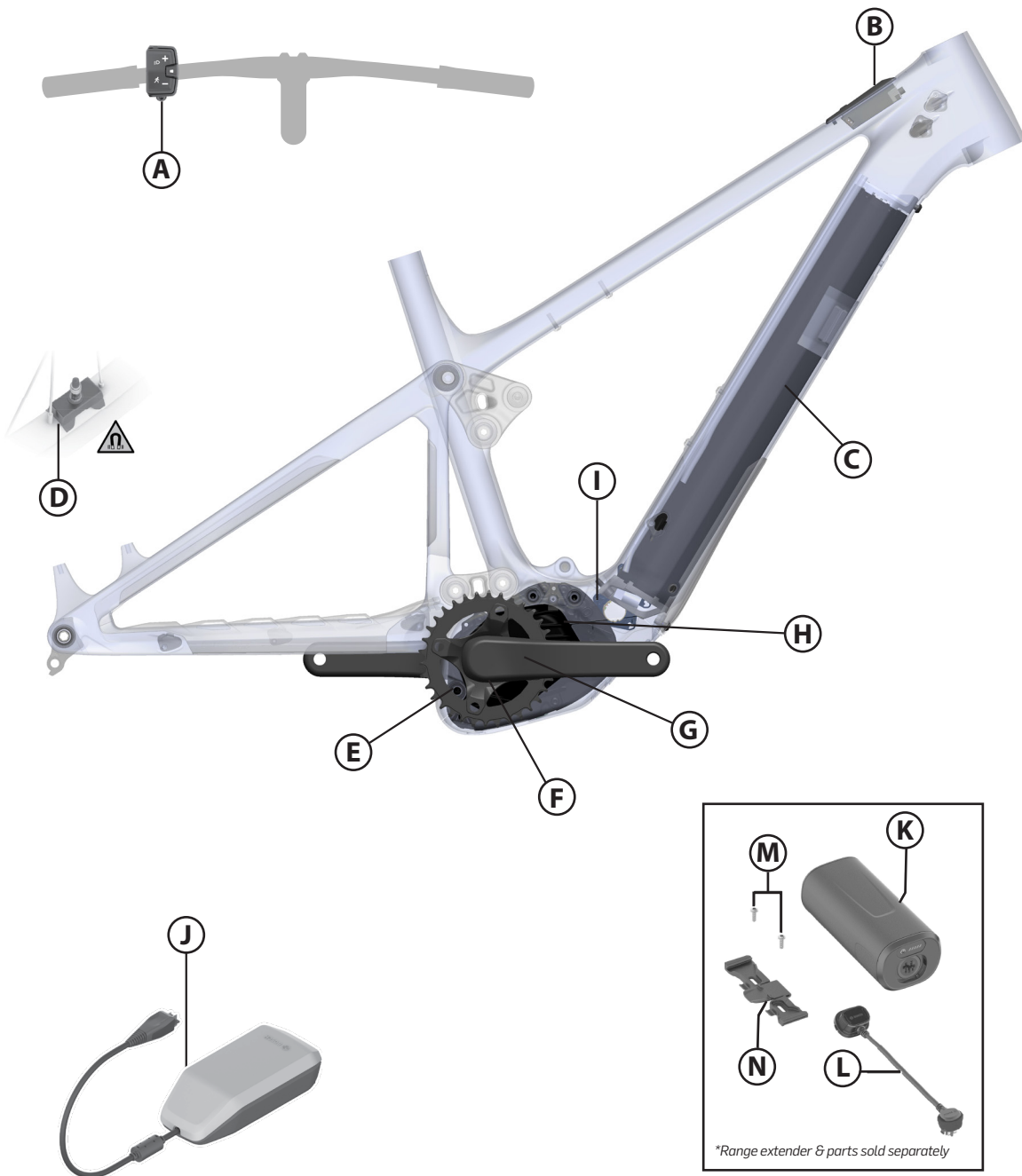
NOT PICTURED	PART NUMBER	DESCRIPTION	TORQUE	*
-	I57MM THROUGH AXLE V5	I57MM UDH REAR AXLE	15 NM (11 LB-FT)	G
-	-	I2MM AXLE WASHER (INCLUDED W/ AXLE)		G
-	FP-CVR-MECH-FRM-V4	INTERNAL ROUTING CABLE CAP (MIRRORED)		
-	FP-CLM-DUAL-FRM-VI	INTERNAL ROUTING DUAL CLAMP		
-	EBII.200.OOP	M6 DRIVE UNIT MOUNTING BOLTS	10 NM (7 LB-FT)	L
-	I270.014.085/I270.016.I19	CHAINRING LOCKRING AND O-RING	30 NM (22 LB-FT)	G

BIKE CARE			
*	PRODUCT TYPE	RECOMMENDED PRODUCT	
G	GREASE	MOTOREX BIKE GREASE 2000	
L	THREAD LOCKER**	LOCTITE THREAD LOCKER #243 (OR EQUIVALENT)	
G/L	GREASE (BOLT SHAFT) / THREAD LOCKER (BOLT THREADS)	SEE ABOVE	
A	ANTI-SEIZE	MOTOREX COPPER PASTE	
Y	LIGHT DUTY THREAD LOCKER	LOCTITE THREAD LOCKER #222 (OR EQUIVALENT)	
R	RETAINING COMPOUND	LOCTITE RETAINING COMPOUND #820 (OR EQUIVALENT)	

**THREADLOCKER SHOULD ALWAYS BE APPLIED TO THE CORRESPONDING FEMALE THREADS FOR THE BOLT SPECIFIED



SHUTTLE AM BOSCH SYSTEM PARTS



PARTS & COMPONENTS				
LETTER	PART DESCRIPTION	PART NAME	TORQUE	*
A	MINI REMOTE	EBI3.100.001		
B	SYSTEM CONTROLLER	EBI3.100.000		
	1300MM HMI CABLE	EBI2.120.006		
	SCREW FOR SYSTEM CONTROLLER	EBI3.200.03B		
C	POWERTUBE 750 BATTERY (US, CAN, JP, KOR)	EBI2.100.002		
	POWERTUBE 750 BATTERY (EU28, CH, NO, AUS, NZ)	EBI2.100.00X		
	POWERTUBE 625 BATTERY (RIDE LEVEL BUILDS US, CAN, JP, KOR)	EBI2.100.013		
	POWERTUBE 625 BATTERY (RIDE LEVEL BUILDS EU28, CH, NO, AUS, NZ)	EBI2.100.01I		
D	RIM MAGNET/ SLEEVE (SPEED SENSOR)	EBI1.200.015/ EBI1.200.02S		
E	SPIDER & CHAINRING (RIDE BUILDS)	ES-BSC-104-565-34T		
	SPIDER & CHAINRING (PRO BUILDS)	ES-BSC-104-565/ 00.6218.034.003		
	SPIDER & CHAINRING (TEAM BUILDS)	ES-BSC-104-565/ 00.6218.034.003		
F	DRIVE UNIT LOCKRING & O-RING	I270.014.085/ I270.016.119	30 NM (22 LB-FT)	
G	CRANK ARMS (RIDE BUILDS)	EC-ISIS-160A		
	CRANK ARMS (PRO BUILDS)	EC-ISIS-160A		
	CRANK ARMS (TEAM BUILDS)	EC-ISIS-160CM		
H	CX PERFORMANCE DRIVE UNIT	EBI1.100.000		
	CX PERFORMANCE RACE EDITION DRIVE UNIT	EBI1.100.00G		
I	CHARGING SOCKET & CABLE	EBI2.120.048		
	CHARGING SOCKET COVER	EBI2.120.01B		
	CHARGING SOCKET HOLDER	EBI2.120.01A		
	CHARGING SOCKET O-RING 24X2	EBI2.120.019		
	CHARGING SOCKET SCREW M3X14	F04N.002.663		
J	BATTERY CHARGER 4A110V/CABLE (US)	EBI2.110.000/ I270.020.343		
	BATTERY CHARGER 4A 230V/CABLE(EU)	EBI2.110.001/ I270.020.330		
	BATTERY CHARGER 4A 230V/CABLE(AUS)	EBI2.110.001/ I270.020.344		
	BATTERY CHARGER 4A 230V/CABLE(UK)	EBI2.110.001/ I270.020.331		
	POWERMORE 250 KITS (AVAILABLE FROM PIVOT)	BOSCH RANGE EXTENDER 150MM / BOSCH RANGE EXTENDER 250MM		
K	POWERMORE 250 RANGE EXTENDER BATTERY (NA/EU)	EBI2.100.02T/ EBI2.100.02S		
L	POWERMORE CABLE 150MM	EBI2.120.036		
	POWERMORE CABLE 250MM	EBI2.120.08J		
	POWERMORE CABLE 300MM	EBI2.120.07C		
M	M5X8 BRACKET FASTENING SCREWS	FP-SCW-BTN-FLG-M5*0.80*8MM	3 NM (2.6 IN·LB)	
N	BRACKET FOR POWERMORE	EBI2.110.01A		

NOT PICTURED	PART DESCRIPTION	PART NAME	TORQUE	*
-	DRIVE UNIT CONNECTION SHORT PLATE LEFT	EBI1.200.00U		
-	DRIVE UNIT CONNECTION SHORT PLATE RIGHT	EBI1.200.00S		
-	BATTERY ADAPTER 2 (2 PLUG IN LOCATION FOR BATTERY CABLE)	EBI2.100.015		
-	BATTERY CABLE 500MM	EBI2.120.00V		
-	LOGO BEZEL FOR PERFORMANCE CX DRIVE UNIT	EBI1.200.00Z		
-	LOGO BEZEL FOR PERFORMANCE CX RACE EDITION DRIVE UNIT	EBI1.200.01B		

*Range extender & parts sold separately